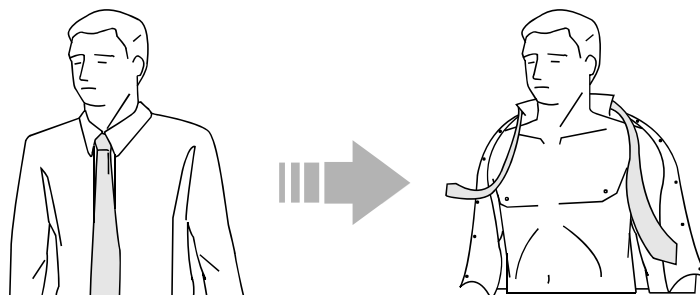


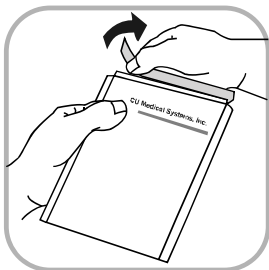
3. Remove the clothing of the patient



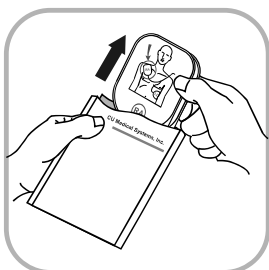
⚠ CAUTION

Do not waste time in removing the patient's clothing. If necessary, rip off or cut off the patient's clothing.

4. Tear open the packaging of the pads

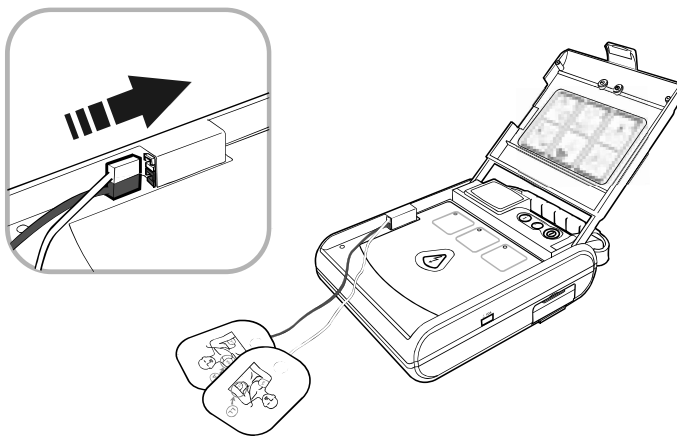


5. Take the pads out of its packaging

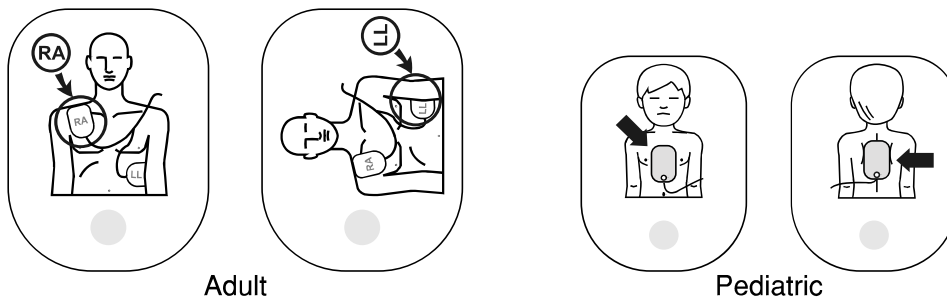


4. Using the i-PAD

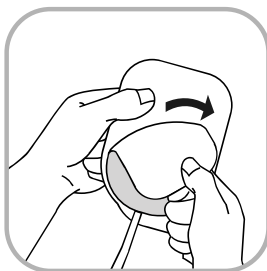
6. Plug the connector of the pads into the AED electrode pads connector port of the i-PAD



7. Look at the graphics on the back of the pads. The graphics indicate the positions of the pads on the patient's body.



8. Peel off the protective sheets of the pads.

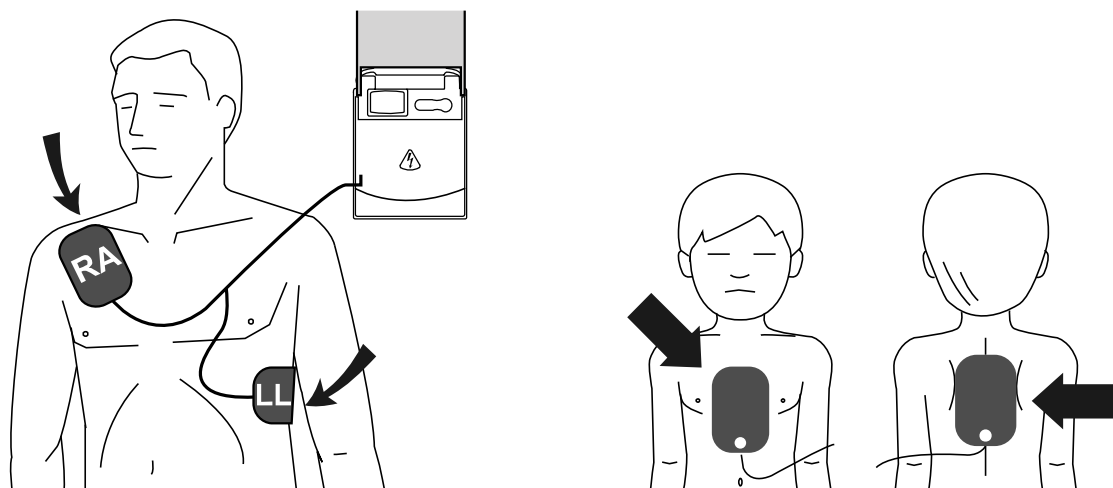


CAUTION

Check to see that the pads are not damaged and the gel has not dried out.
If the pads are damaged or the gel has dried out, use a new set of pads.

Main Rescue Sequence

STEP 1: Attach the pads



The i-PAD prompts you with “Do not touch the patient” if it senses a connection to the patient.

⚠ WARNING

The patient should be still during ECG signal acquisition and analysis to minimize motion artifacts in the signal.

STEP 2: Press the SHOCK button if instructed

The i-PAD begins rhythm analysis as soon as it is connected to the patient.

The i-PAD activates the following Indicators and Voice prompt during rhythm analysis:

- **Voice prompt:** “Analyzing heart rhythm”
- **Graphical Rescue Guide:** lights up the second step of the rescue operation.

After rhythm analysis, the i-PAD decides whether the patient needs a shock or not.

4. Using the i-PAD

If a shock is needed:

Indicators and Voice prompts:

- **Beeper:** 1 second continuous beep
- **Voice prompt:** “Shock advised”
- **Beeper:** beeps continuously until the SHOCK button is pressed or until it disarms itself if the SHOCK button is not pressed within 15 seconds.
- **Voice prompt:** “Press the flashing orange button, now. Delivery shock, now”
- **SHOCK button backlight:** flashing orange.

You must press the SHOCK button to deliver the shock.



- If you press the SHOCK button, the i-PAD delivers a defibrillating shock. It informs you of the shock delivery with the voice prompt: “Shock delivered”
- If you do not press the SHOCK button within 15 seconds, the i-PAD disarms itself and proceeds to CPR Guidance.

If a shock is not needed:

Indicator:

- **Voice prompt:** “No shock advised”

NOTICE

While the i-PAD is charging after a shockable rhythm is detected, the ECG of the patient is continuously acquired and analyzed. If the ECG rhythm changes to a non shockable rhythm, the i-PAD disarms itself.

WARNING

Do not let anybody touch the patient when you press the SHOCK button. Defibrillation shock can cause operator or bystander injury.

STEP 3: Perform CPR

The i-PAD directs you to do CPR after delivering one shock.

Indicators and Voice Prompts

- **Graphical Rescue Guide:** lights up the third step of the rescue operation.
- **For other indicators and voice prompts, see CPR Protocol**

The CPR protocol depends on the following settings:

1. Rescue Provider
 - Lay Rescuer
 - Healthcare Provider
2. Compression-Ventilation Ratio
 - 30:2 (30 compressions, 2 breaths)
 - 15:2 (15 compressions, 2 breaths)